



Series
8821

Underwater connectors
for mission critical applications

Description

- › Dry mate underwater connector
- › 4 shell sizes
- › Up to 61 contacts
- › Pressure ratings up to 50 MPa with standard materials



Technical features

Materials

- › **O-ring material:**
Fluoroelastomer, FKM
- › **Insulator material:**
High performance thermoplastic
- › **Contact material:**
Copper alloy
- › **Contact plating:**
Gold over Nickel

Mechanical

- › **Durability:**
≥ 200 mating cycles

Environmental

- › **Upper limiting temperature:**
+ 125 °C
- › **Lower limiting temperature:**
- 40 °C

Electrical

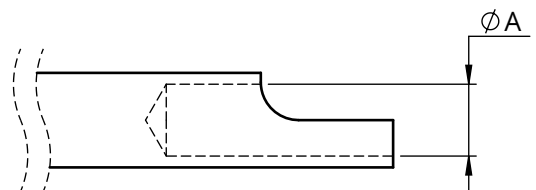
- › **Insulation resistance:**
≥ 1 GΩ

Pressure ratings

Shell size	Stainless steel		Bronze	
	Rated pressure	Hydrostatic test pressure	Rated pressure	Hydrostatic test pressure
16 to 25	25 MPa (250 bar)	37,5 MPa (370 bar)	50 MPa (500 bar)	75 MPa (750 bar)
32	22 MPa (220 bar)	33 MPa (330 bar)	44 MPa (440 bar)	66 MPa (660 bar)

Contacts

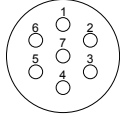
Contact size	Contact resistance	Current per contact max.	A min.
0,75 mm ²	≤ 3,0 mΩ	13 A	1,4 mm
1,50 mm ²	≤ 2,5 mΩ	15 A	1,9 mm



Contact arrangements

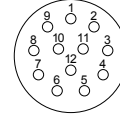
Shell Size 16

16-07



7 x 1,5 mm² Service 2

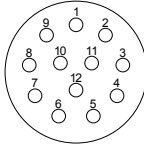
16-12



12 x 0,75 mm² Service 1

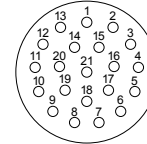
Shell Size 20

20-12



12 x 1,5 mm² Service 2

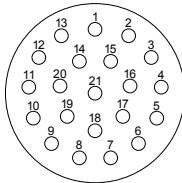
20-21



21 x 0,75 mm² Service 1

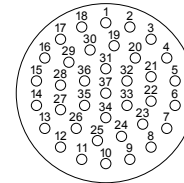
Shell Size 25

25-21



21 x 1,5 mm² Service 2

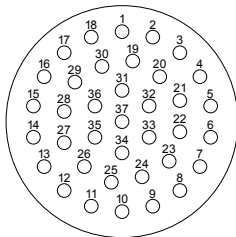
25-37



37 x 0,75 mm² Service 1

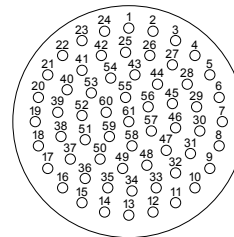
Shell Size 32

32-37



37 x 1,5 mm² Service 2

32-61



61 x 0,75 mm² Service 1

Service category	Clearance	Creepage distance	Rated voltage (r.m.s.)	Rated impulse voltage	Test voltage (r.m.s.)
1	≥ 2,0 mm	≥ 2,5 mm	250 V	3,0 kV	1,68 kV
2	≥ 2,5 mm	≥ 2,5 mm	250 V	3,6 kV	1,96 kV

Connector part numbers

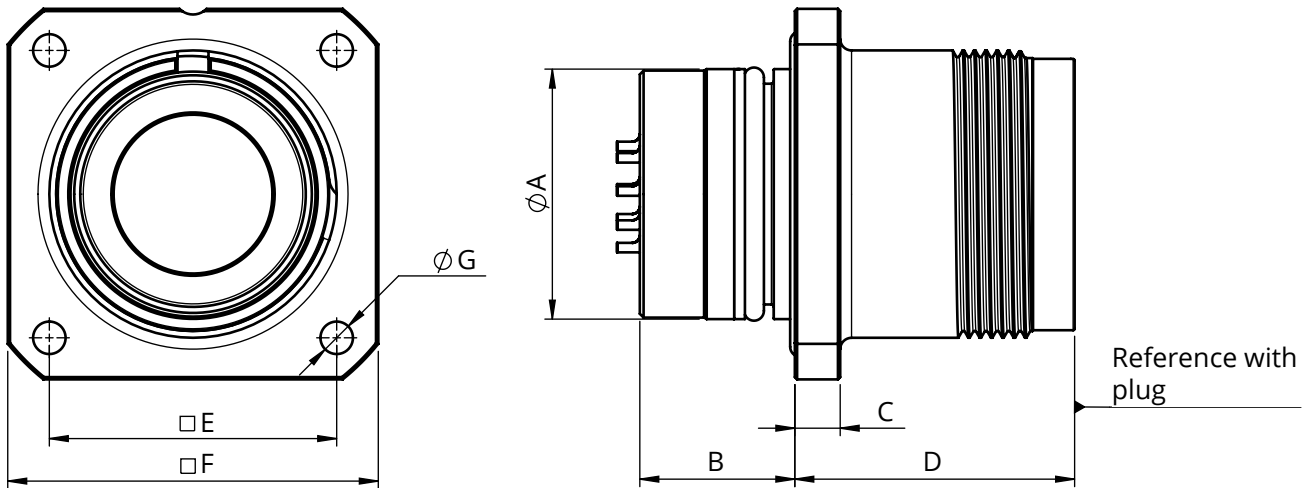
8821 -		00	B1 -	32 -	61	M
Shell type						
00	Square flange receptacle					
10	Plug					
Shell material						
B1	Nickel Aluminium Bronze, CuAl10Ni5Fe4					
S4	Stainless Steel, type 316L					
Shell size						
16, 20, 25, 32						
Contact layout						
See page 3						
Contact type						
M	Male contacts					
F	Female contacts					

Backshell part numbers

8821-B0		1	B1 -	32 -
Screen termination adapter				
0	None			
1	Standard			
Shell material				
B1	Nickel Aluminium Bronze, CuAl10Ni5Fe4			
S4	Stainless Steel, type 316L			
Shell size				
16, 20, 25, 32				

Mechanical dimensions

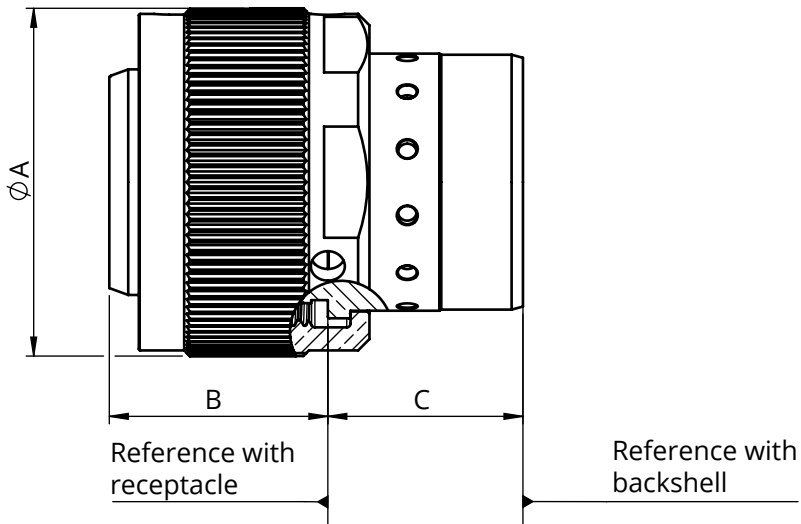
Square flange receptacle type 00



Shell size	A ISO f7	B max.	C max.	D max.	E	F max.	G min.
16	29,83 mm	24,6 mm	6,1 mm	37,3 mm	34 mm	45 mm	4,3 mm
20	33,06 mm	24,6 mm	6,1 mm	37,3 mm	38 mm	49 mm	4,3 mm
25	39,59 mm	26,6 mm	6,1 mm	37,3 mm	44 mm	56 mm	5,4 mm
32	47,76 mm	26,6 mm	6,1 mm	37,3 mm	50 mm	64 mm	6,4 mm

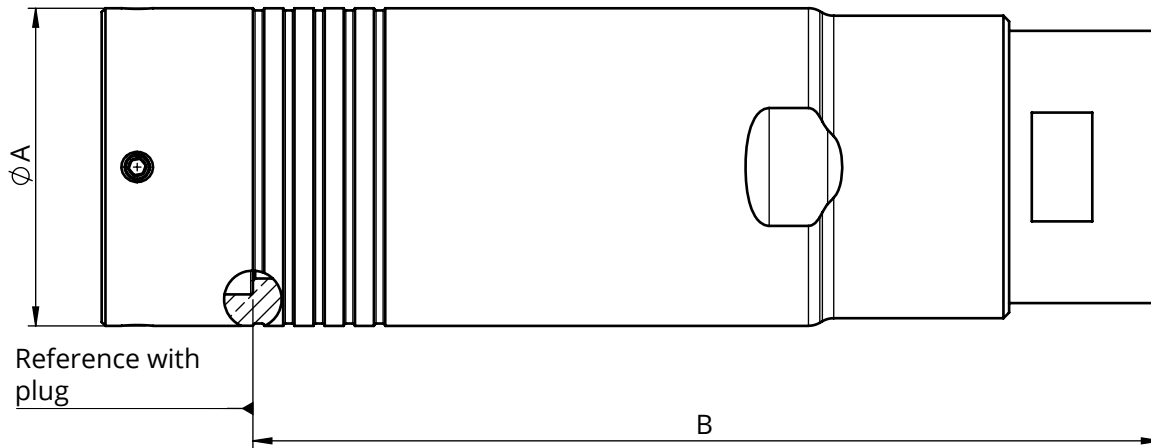


Plug type 10



Shell size	A max.	B max.	C max.
16	42 mm	29 mm	23,6 mm
20	46 mm	29 mm	23,6 mm
25	54 mm	29 mm	25,4 mm
32	61 mm	29 mm	25,4 mm

Backshell type B

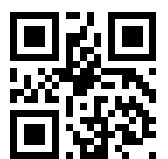


Shell size	A max.	B max.	Cable diameter max.
16	38 mm	111 mm	16 mm
20	42 mm	126 mm	22 mm
25	46 mm	134 mm	25 mm
32	56 mm	140 mm	32 mm

Series 8821



■ made
■ in
■ Germany



BEST CONNECTIONS IN EVERY ENVIRONMENT

JOWO – Systemtechnik AG
Lange Wand 12 | 27753 Delmenhorst
info@jowo.ag | www.jowo.ag